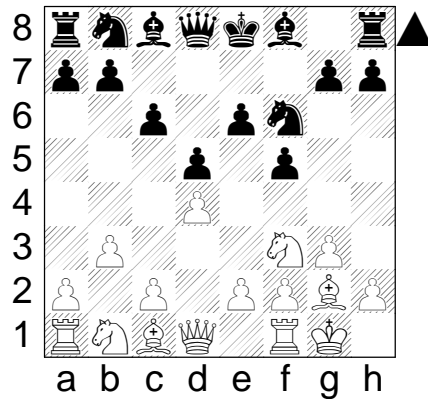


**White vs. Black**  
**Analysis, Moss Beach, CA (USA), (I) 10/28/2005**  
 Fianchetto Stonewall Dutch (for White)

1. d4 d5 2. Nf3 e6 3. g3 f5 4. Bg2 Nf6 5. O-O c6 6. b3

The main idea is to get the bishop to a3, but this move also supports a c4 plan to put pressure on the center.



**6... Bd6**

Whether the bishop goes to d6 or e7 doesn't make a lot of difference, but at e7, Black can't play the main line with ...Qe7. **7. c4 Qe7**

This prevents the immediate Ba3. White can now continue with the plan by playing a4, or can just put the bishop at b2. Both are good plans, but we'll stick with the Ba3 strategy, it makes the repertoire easier to remember.

7... O-O 8. Ba3! Bxa3 9. Nxa3 Qe7 (9... Nbd7 10. Nc2 Ne4 11. Nce1 Ndf6 12. Nd3 Bd7 13. Nfe5 Be8 14. e3 g5 15. f3 Nd6 16. c5 Nf7 17. b4 Nxe5 18. dxe5 Nd7 19. f4 a5 20. a3 g4 21. Qc2 axb4 22. axb4 Rxa1 23. Rxa1±

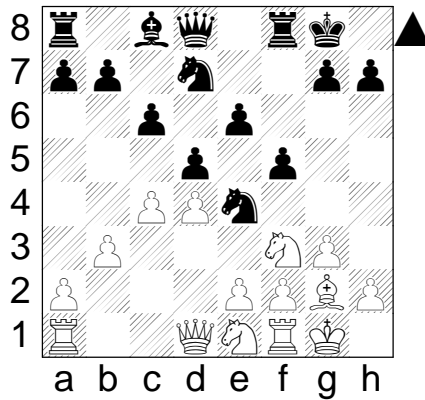
1-0, Lopez Carlos Manuel (CUB) 2321 - Nunez A (AND) 2205, Cuba 1992; 9... Bd7 10. Nc2 Be8 11. Nce1 Bh5 12. Ne5 Nbd7 13. N1d3 Nxe5 14. dxe5!? Nd7 15. Nf4 Bf7 16. cxd5 cxd5 17. Bxd5!? exd5 18. e6 Nf6 19. exf7+ Rxf7 20. Qd3 Qd7 21. Rfd1 Rd8 22. Rac1 Re7 23. Rc5 b6 24. Nxd5! Nxd5 25. Rxd5 Qxd5 26. Qxd5+ Rxd5 27. Rxd5 Rxe2 28. a4±

1-0, Bofill Mas Alejandro (ESP) 2376 - Roa Alonso Santiago (ESP) 2344, Almeria (Spain) 1989) 10. Nc2 Nbd7 11. cxd5 exd5 12. Nce1 Ne4 13. Nd3 b6 14. Qc2 Bb7 15. b4 a5 16. a3 Rfc8 17. Rfc1 Qf6 18. Nfe5 Nf8 19. Qb2 axb4 20. axb4 Qd6 21. Rxa8 Rxa8 22. b5 cxb5 23. Qxb5 Ne6 24. e3 Nf6 25. Nc4 dxc4 26. Bxb7±

1-0, Bator Robert (SWE) 2430 - Wikstrom Per (SWE) 2244, Sweden 2000;

7... Nbd7 8. Ba3 Bxa3 9. Nxa3 O-O 10. Nc2 Ne4 11. Nce1

Although White's advantage is small, the record from this position strongly favors White.



11... Ndf6 (11... b6 12. Nd3 Bb7 13. Rc1 Rc8 14. e3 Qe7 15. Qe2 a5 16. Qb2 Ba6 17. Rfd1 g5 18. Nfe5 Nxe5 19. Nxe5 g4 20. Rc2 Ng5 21. Rdc1 Nf7 22. Nd3 Nh8 23. Bf1 Ng6 24. cxd5 cxd5 25. Rc6! Rxc6 26. Rxc6 Rb8 27. Qc3 Bb5 28. Rc7 Qd6 29. Ne5 Bxf1 30. Kxf1 Nf8 31. Ra7 Qd8 32. Rc7 Qd6 33. Kg2 Qa3 34. Ra7 Qd6 35. Nf7!

1-0, Tukmakov Vladimir B (UKR) 2563 - Vuilleumier Alex (SUI) 2224, Neuchatel (Switzerland)

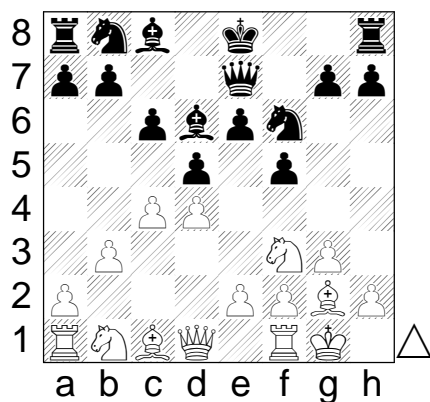
2003.05 [...] (35... Qa3 36. Nh6+ Kh8 37. Qc7+-); 11... Qe8 12. Nd3 Qh5 13. Rc1 g5

is overambitious. 14. Nfe5 Ndf6 15. f3 Nd6 16. e3 Qh6 17. c5 Nde8 18. Qe2 Ng7 19. b4 a6 20. a4 Bd7 21. Rb1 Be8 22. Rb2 Nd7 23. Nxd7 Bxd7 24. Ne5 Be8 25. f4 Nh5 26. g4 Ng7 27. Rf3 fxg4 28. Nxg4 Qg6 29. Ne5 Qh5 30. fxg5 Nf5 31. Rf4 Qxe2 32. Rxe2 Bh5 33. Bf3 Bxf3 34. Nxf3 Ne7 35. Rxf8+ Rxf8 36. Kg2 Ng6 37. Kg3 Kg7 38. h4 h5 39. Rb2 Ne7 40. Rb3 Nf5+ 41. Kh3 Nd6? 42. cxd6 Rxf3+ 43. Kg2 Rf7 44. b5 axb5 45. axb5 Rd7 46. bxc6 bxc6 47. Rb6 Rxd6 48. Kg3 e5 49. dxe5 Re6 50. Kf4 Kg6 51. Rb8 c5 52. Rd8

1-0, Markus John Raymond (NED) 2238 - Vedder Richard (NED) 2218, Dieren (Netherlands)

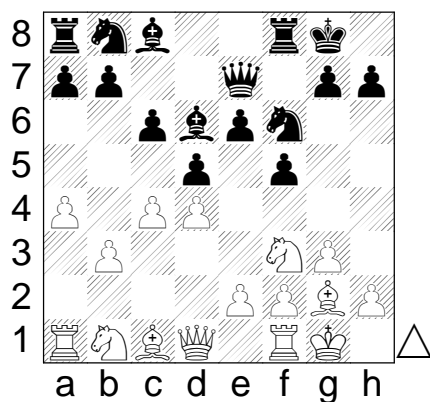
2000) 12. Nd3 Bd7 13. Nfe5 Be8 14. e3 g5 15. f3

see Lopez–Nunez, above.



### 8. a4 O-O

8... a5!? 9. Ba3 Bxa3 10. Nxa3 O-O 11. Nc2 b6! 12. Nce1 Bb7 13. Nd3 Na6 14. Nfe5 c5 (14... Rfd8 15. Rc1 c5 16. cxd5 Bxd5 17. Bxd5 Rxd5 18. Nf4 Rd6 19. e3 cxd4 20. exd4∞) 15. cxd5 (15. Nf4!?) 15... Bxd5 16. dxc5 Bxg2 17. Kxg2 Nxc5 18. Nxc5 Qxc5 19. Nd3 Qd5+ 20. Kg1 e5= 0-1, Almada Enrique (SUI) 2368 - Barbero Gerardo F (ARG) 2490, Lenk (Switzerland) 1994;  
 8... Nbd7 9. Ba3 Bxa3 10. Nxa3  
 transposes below.

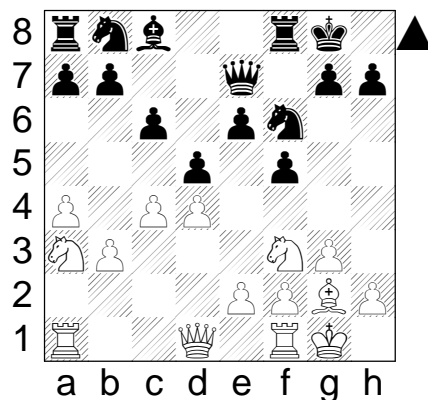


### 9. Ba3 Bxa3

9... Nbd7 10. Bxd6 Qxd6 11. Nc3 Ne4 12. Qd3!?!;  
 9... b6 10. Bxd6 Qxd6 11. a5 Bb7 12. Nbd2 Nbd7 13. Qb1 Ne4 14. Qb2 Qb4 15. Rfc1 Nxd2 16. Nxd2 Qd6 17. b4 b5 18. cxb5 cxb5 19. Rc3 Rac8 20. Rac1 Rxc3 21. Rxc3 Rc8 22. Rxc8+ Bxc8 23. Qc3 Bb7 24. Nb3±/= 1/2-1/2, Malykin Vitaly (UKR) 2387 - Spiridonov Nikolai (UKR) 2158, Kiev (Ukraine) 2000

## 10. Nxa3

The knight is only temporarily on the edge of the board. It is coming to c2, and can then go to e3, or, more commonly, to d3 via e1.



## 10... b6

Black has several strategies available. The bishop can come to b7 or head for h5 via e8, typical of Stonewall formations. Black can also choose to plant a knight on e4 and play aggressively on the kingside with ...g5.

10... Bd7 11. Nc2 Be8 12. Nce1 Bh5 (12... Nbd7 13. Nd3 Ne4 14. a5! a6 15. Qc1 Rc8 16. Qa3 Qf6 17. Rac1 g5 18. Qb4 Rc7 19. Nfe5 Qd8 20. f3 Nef6 21. Qd6±

1/2-1/2, Mirzoev Azer (AZE) 2430 - Yilmaz Turhan (TUR) 2390, Baku (Azerbaijan) 1997) 13. Nd3 Nbd7 14. Qc2 h6 (14... dxc4?!

This capture is usually wrong-headed. 15. Qxc4 Ne4 16. Qc2 c5 17. Rac1 cxd4 18. Nxd4 Nd6 19. Nb5 Rac8 20. Qd2 Nxb5 21. axb5 Nb6 22. Qe3 Be8 23. Ra1 Rc7 24. Rxa7 Nc8 25. b6 Rc6 26. Bxc6 Bxc6 27. Ra8 g5 28. Qe5 f4 29. Qc7

1-0, Hort Vlastimil (GER) 2543 - Maric Rudolf (YUG) 2450, Vinkovci (Croatia) 1970) 15. Nfe5 Nxe5 16. Nxe5 Nd7 17. Nxd7 Qxd7 18. e3

1/2-1/2, Gerzhoy Leonid (ISR) 2380 - Wang Yue (CHN) 2492, Heraklio (Greece) 2002±;

10... a5 11. Ne5 Nbd7 12. Nxd7 Bxd7 13. Qd2 (13. f4 Ne4 14. Nc2 b5 15. c5 bxa4 16. bxa4=);

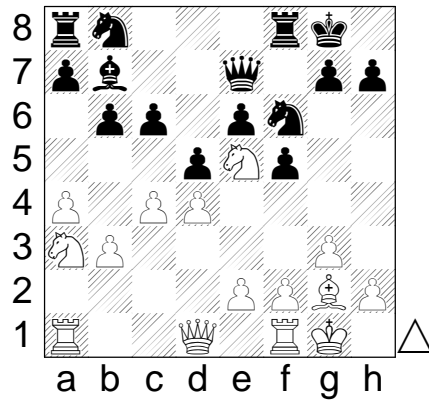
10... Nbd7!? 11. Nc2 Ne4 12. Nce1 g5 13. Nd3 Rf6 14. Nfe5 Rh6 15. f3 Nef6 16. Qd2 Nxe5 17. Nxe5 Nd7 18. Nxd7 Bxd7 19. e4

1-0, Heim Sverre (NOR) 2366 - Glenne Bjorn Erik (NOR) 2250, Asker (Norway) 2000;

10... Ne4 11. Nc2 Nd7 12. Nce1 g5 (12... b6 13. cxd5 cxd5±) 13. Nd3 Rf6 14. Nfe5 Rh6 15. f3 Nef6 16. Qd2 Nxe5 17. Nxe5 Nd7 18. Nxd7 Bxd7 19. e4±

1-0, Heim Sverre (NOR) 2366 - Glenne Bjorn Erik (NOR) 2250, Asker (Norway) 2000

11. Ne5 Bb7



12. cxd5! cxd5 13. Qd2 Nc6 14. Nxc6 Bxc6 15. Nc2 Rfc8 16. Rfc1 Bb7 17. a5!?

17. Nb4 a5 18. Nd3 Ne4 19. Qe3

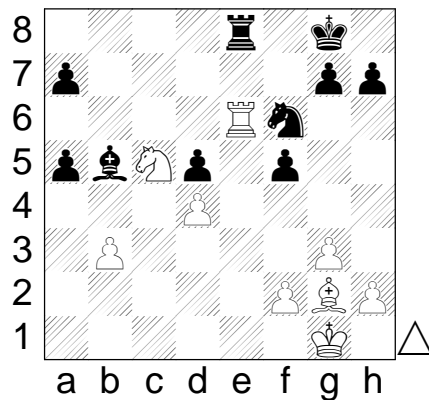
looks a bit better for White, who will soon play f3.

17... Qd6 18. Qb4 Qxb4 19. Nxb4 Rxc1+ 20. Rxc1 bxa5 21. Nd3 Rc8 22. Ra1 Ba6 23. Nc5

This is what White was aiming for. The sacrifice of the pawn at e2 was planned. 23... Bxe2 24. Re1

24. Nxe6 a4! 25. bxa4=

24... Bb5 25. Rxe6 Re8



26. Rxe8+?

This abandons any White advantage.

26. Re5! Bc6 27. f3

The king walks over to the queenside, and Black is in a bind. 27... Rxe5 (27... g6 28. Bf1 Kf7 29.

Kf2) 28. dxe5 Nd7 29. Nxd7 Bxd7 30. Kf2 (30. f4 Be6 31. Bf3 d4 32. Bd1 Bd5 33. Kf2 Kf7 34. Ke2

Be4 35. Kd2 d3!) 30... d4! 31. Ke2 Be6 32. Kd3 Bxb3 33. Kxd4 a4 34. Kc3 a5 35. f4

In the long run, White's pawn at e5 is better than both Black pawns. Probably a draw, but White has all the chances.

26... Bxe8 27. Kf1 Bb5+ 28. Ke1 Ne4 29. Bxe4 fxe4 30. Kd2 g5 31. Kc3 Kg7 32. Nb7 Kg6 33. Nxa5 Kh5 34. Kb4 Bd3 35. h3 Bf1 36. Kc5! Bxh3 37. Kxd5 Kg4 38. Kxe4 Bg2+ 39. Ke5 Kf3 40. d5 Kxf2 41. d6 Bh3 42. Kf6 h6

42... Kxg3 43. Kxg5 Kf3 44. Nc4 (44. Kf6 h5 45. Nc6! Ke4! 46. Ne7 Bd7 47. Ng6 Kd4 48. Ke7 Bc8 49. Kd8 Bg4) 44... Ke4 45. Kf6 h5

43. Nc6 Kxg3 44. Nxa7 h5 45. b4 h4 46. b5 Bd7 47. b6?

47. Ke7! Bxb5 48. Nxb5 h3 49. d7 h2 50. d8=Q h1=Q 51. Qd6+

47... h3 48. b7 h2 49. b8=Q h1=Q 50. Qb3+

Agreed drawn, Hernando Rodrigo Julio A (ESP) 2266 - Granados Gomez Manuel (ESP) 2358, Catalonia (Spain) 1999 [±]