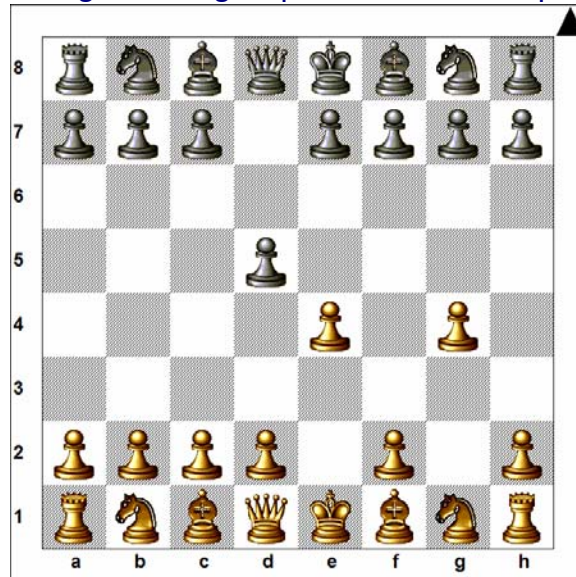


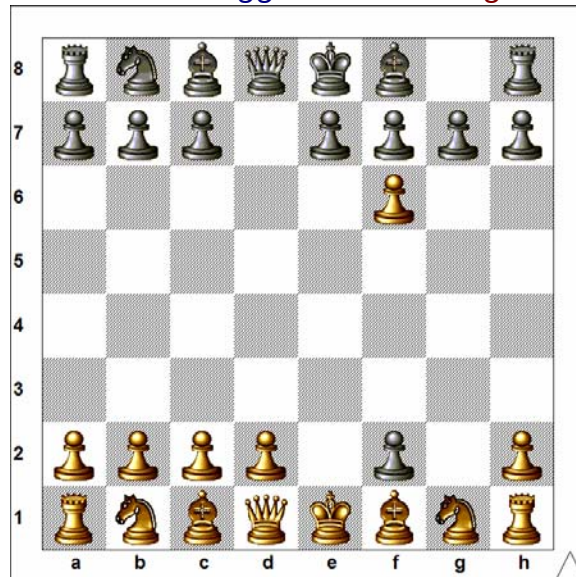
Grob Opening: Zilbermints Gambit
Analysis by FM Eric Schiller 1/15/2004

1.g4 d5 2.e4 This gambit can also be reached from the Scandinavian Defense with 1.e4 d5 2.g4. In either case, I'm not much impressed with White's compensation for the pawn. Most of the material in this article derives from emails exchanged among a small group of unorthodox opening fans.



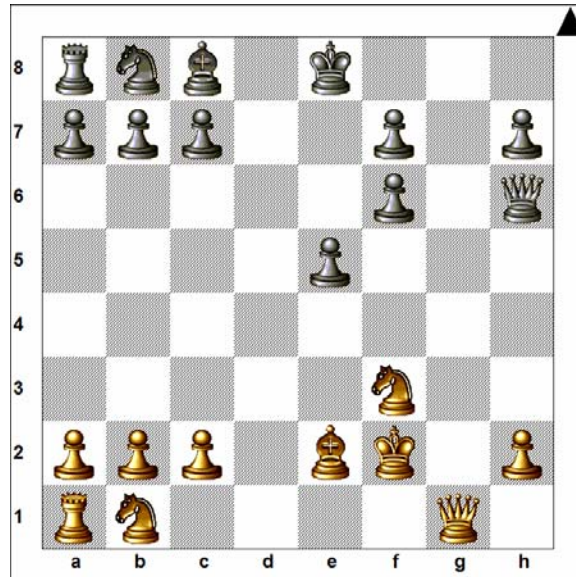
2...dxe4 There is no reason to decline the gambit, but there is an interesting sacrificial line in one alternative defense.

2...Nf6 3.f3 dxe4 4.g5 (Zilbermints) 4...exf3!? I suggested that White might face problems in this aggressive line. 5.gxf6 f2+!

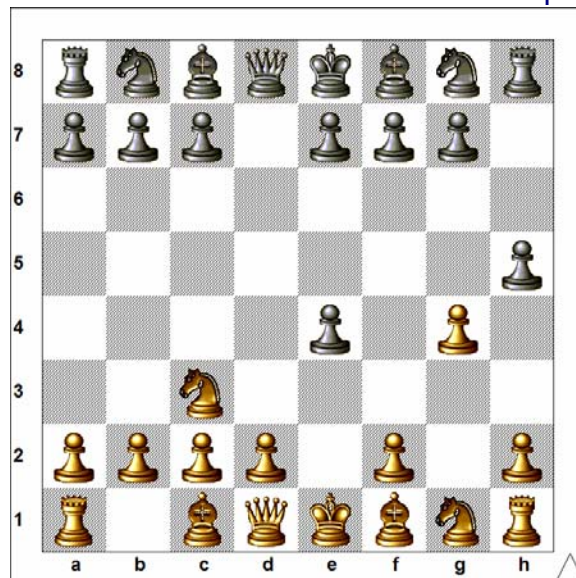


6.Kxf2 Qd4+ 7.Kg2 gxf6 8.Be2 Rg8+ 9.Kf1 e5 (9...Qh4!?) 10.Nf3 (Zilbermints) (10.c3 Qh4 11.Bf3 (Zilbermints) 11...Bc5!) 10...Qg4! 11.Rg1 (11.Ke1 e4!) 11...Qh3+ 12.Kf2 (12.Ke1 Rxc1+ 13.Nxc1 Qxh2--+) 12...Bc5+ 13.d4 Bxd4+ 14.Be3 Rxc1 15.Qxc1 Bxe3+ 16.Kxe3 Qh6+!

17.Kf2 Black has three pawns for the piece, and the White king remains a target. A difficult position to evaluate. It is all rather academic, because 2...Nf6 is inferior to accepting the gambit. Still, Black can choose either 17...Bf5 or the rather interesting 17...Qf8!? or even try 17...e4. I leave this as an exercise for the reader, since I see no reason ever to decline the gambit.

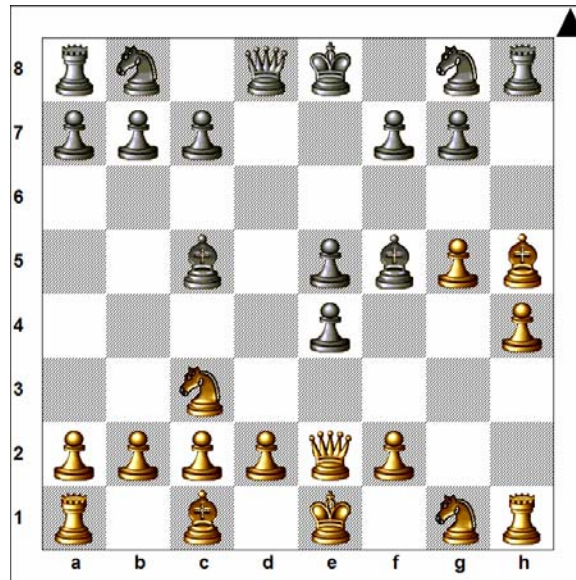


3.Nc3 h5 This is a most effective plan against White's radical play. pawn at g4 is attacked. One way or another White must concede the square.



4.g5 Bg4! 5.Be2 Bf5! Now that the White bishop cannot get to g2, protecting the e-pawn is the correct plan. White takes great risks in capturing at h5.
 6.Bxh5 e5
 6...e6 is surely stronger!
 7.h4 Bc5

7...Qd7!? Black can continue with ...Nc6 and ...O-O-O.
 8.Qe2



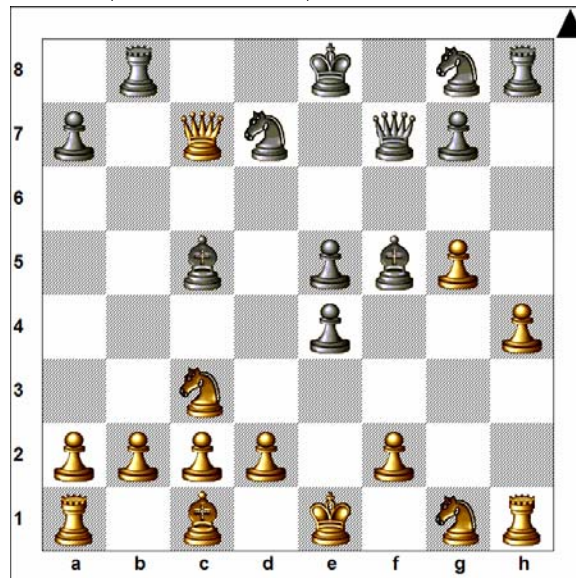
8...Qd7!

8...Nc6?? 9.Bxf7+ Kxf7 10.Qc4+± Zilbermints-Michael Chow, 2001

9.Bxf7+?

9.d3 exd3 10.Qxe5+ Qe7 is also pretty miserable for Black, but not terminal.

9...Qxf7 10.Qb5+ Nd7 11.Qxb7 Rb8 12.Qxc7



12...Bxf2+!! 13.Kxf2 Bh3+ Black wins.