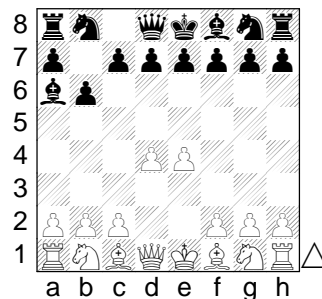


Guatemala Defense
1/15/2004
Analysis
by FM
Eric
Schiller

1. e4 b6 2. d4 Ba6 Black cannot hope for full equality with this opening, but it is not unplayable. After the bishops are exchanged, Black will place the queen at b7. Using a queen in a fianchetto formation is not usually effective. In addition, White owns the center, and it won't be easy for Black to bring serious pressure against it.

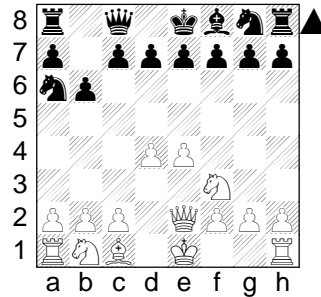


3. Bxa6 Nxa6 4. Qe2

4. Nf3 Qc8 5. O-O Qb7 is a slow and ineffective plan which I used in a few games in Erik Knoppert's world-record setting blitz marathon at London Docklands in 1985: 6. Re1 e6 (6...

d6 7. c4 h6 8. Nc3 c5 9. d5 Nc7 10. e5 O-O-O
 11. a4 e6 12. dxe6 Nxe6 and there were a lot of
 holes in Black's position.) 7. Bg5 h6 8. Bh4
 Ne7 9. c4 g5 10. Bg3 Ng6 11. Nc3 d6 with a
 complicated position, but the queen does look
 a bit silly at b7.

4... Qc8 5. Nf3



5... d6?!

5... e6 is a better move, keeping the king safe
 and not creating light square weaknesses.

6. Nc3 g6 7. e5!? Simply castling is also good. **7...
 Bg7 8. Bf4 Kd8 9. O-O h6 10. Rfe1 Kd7 11. exd6
 cxd6 12. Qb5+ Kd8 13. Bxd6 Nc7 14. Bxc7+ Qxc7
 15. Qd5+ White won, Schoor vs. Nunnally, 1995.**